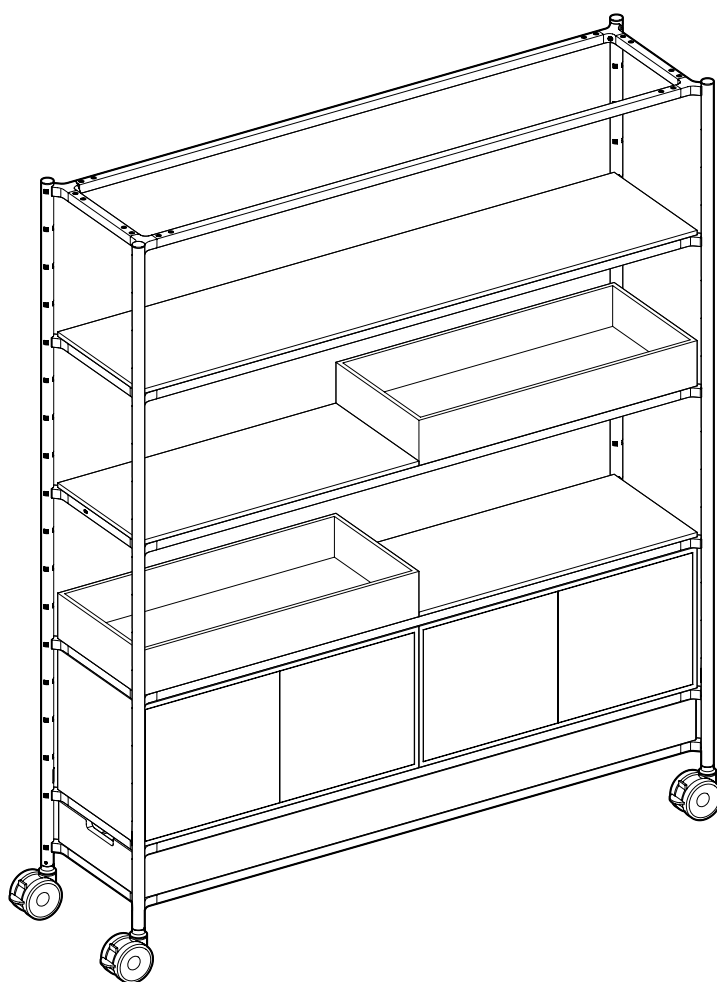


FOS

Instructions for assembly and use



visplay

Content

1	General	4
1.1	Hazard levels indicated by warning notices	4
1.2	Explanation of symbols	5
1.3	Intended use	5
1.4	General safety	6
2	Product description	7
3	Using prefabricated structures	8
3.1	Unpacking	8
3.2	Connecting	9
3.3	Fitting worktop between two modules	10
3.4	Connecting multiple structures	11
4	Operation of FOS Media	12
5	Operation of FOS Meet	13
5.1	Assembling table top	13
6	Accessories	14
6.1	Assembling connection frame	14
6.2	Installing/reconfiguring furniture.....	14
6.3	Assembling open/closed storage box	15
6.4	Assembling whiteboard/pinboard/side panels	16
6.5	Assembling wall rail	17
7	Technical data	18
8	Weight loads	18
9	General information	19
9.1	Cleaning	19
9.2	Storage	19
9.3	Disposal	19

1 General

This manual is provided to ensure the safe and effective use of the “FOS” product.

This manual is a component of the product and must be kept on hand in the vicinity of the product at all times.

All personnel who deal with the product must have read this manual. Compliance with all the safety instructions and handling instructions specified in this manual is a prerequisite for safe work.

The illustrations in this manual are provided for the purposes of general understanding and may deviate from the actual version.

All dimension information in this manual is specified in mm.

Quality assurance

All processes in our company are subject to a comprehensive management system, which conforms to the ISO 9001 quality standard and the ISO 14001 environmental standard.

The Zertifizierungs- und Umweltgutachter GmbH (BSI) audits this management system regularly and issues a certificate of compliance with the standard.

Copyright

This manual is protected by copyright. Its use is permissible as part of the use of the product.

Any use other than this is not permitted without the written consent of the manufacturer.

Our General Terms and Conditions apply for all orders.

1.1 Hazard levels indicated by warning notices

The following hazard levels alert you to potentially dangerous situations:

DANGER

This warning notice indicates a dangerous situation that will result in death or serious injury if it is not avoided.

WARNING

A warning notice designated in this manner indicates a dangerous situation that could result in death or serious injury if it is not avoided.

CAUTION

This warning notice indicates a dangerous situation that could result in minor or moderate injury if it is not avoided.

NOTE

A warning notice designated in this manner indicates a potentially dangerous situation that could result in material damage or environmental damage if it is not avoided.

1.2 Explanation of symbols



Specific instructions for better understanding and operation.

► Individual step

1. Numbered instruction

2. ...

3.

① Action number: defines the sequence of actions in illustrations and is marked in the text.

[1] Position number: Indicated by text in square brackets.

1.3 Intended use

The FOS modules comply with the applicable safety regulations within the scope of their intended use.

- The product may only be used in the commercial area.
- The FOS modules may only be used in dry indoor areas.
- The FOS modules may be used solely in compliance with the permissible load values (see page 18).

Any unintended use and unauthorised modification of the furniture shall be deemed as unauthorised misuse that does not fall within the manufacturer's statutory liability limits.

Misuse

Potential sources of danger:

- Unintended use
- Operation with improperly fitted or inoperative safety and protective devices
- Failure to observe the instructions in the documentation
- Unauthorised modification of the furniture

Residual risks

Furniture can pose residual risks to persons and property. Risk of death/injury can occur due to:

- Misuse
- Incorrect operation
- Missing safety devices (anti-roll device/brake)

1.4 General safety

Carefully read the following safety instructions and information for safe operation before starting work.

Familiarise yourself with all the functions of your furniture.

i FOS is a mobile office system powered with a 230 V electrical connection. The weight of the base box ensures the stability of the unit.

i Some parts of the module are made of wood. Wood is a natural product that can become warped due to changes in room temperature and air humidity.

⚠ WARNING

Risk of injury from tipping furniture

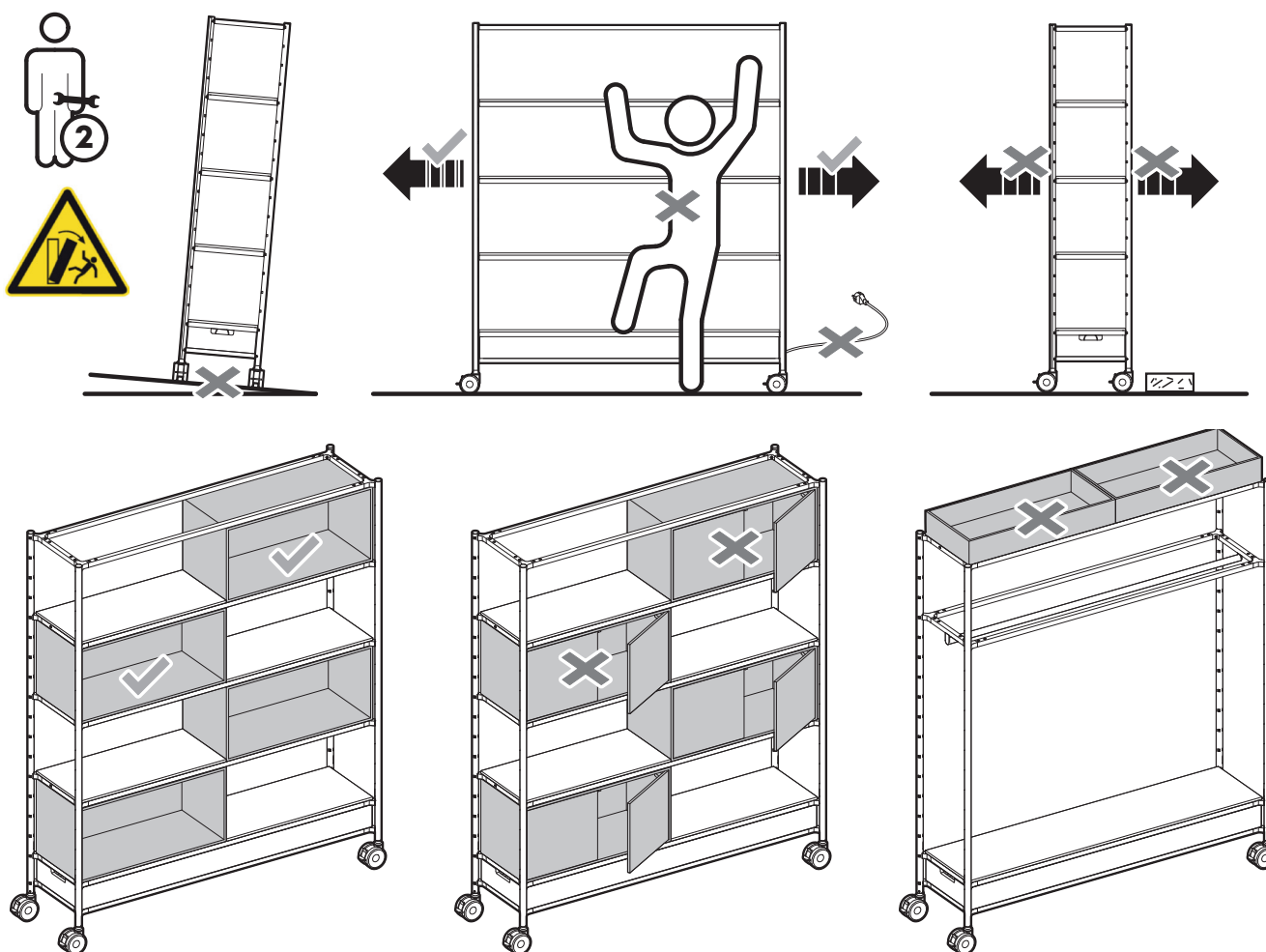
Furniture can cause serious injuries if it tips over.

- ▶ At least two people must be present when changing components and moving the furniture.
- ▶ The cables must be retracted and stowed before changing components or moving the furniture.
- ▶ Stow cables securely, close all doors and remove loose unsecured items before moving the furniture.
- ▶ Release all brakes before moving the furniture. Always ensure the unit is positioned side-on to any obstacles it has to cross.
- ▶ The specified loading values must be strictly adhered to (see Section „8 Weight loads“ on page 18).
- ▶ Never climb on the furniture.

⚠ CAUTION

Trip hazard

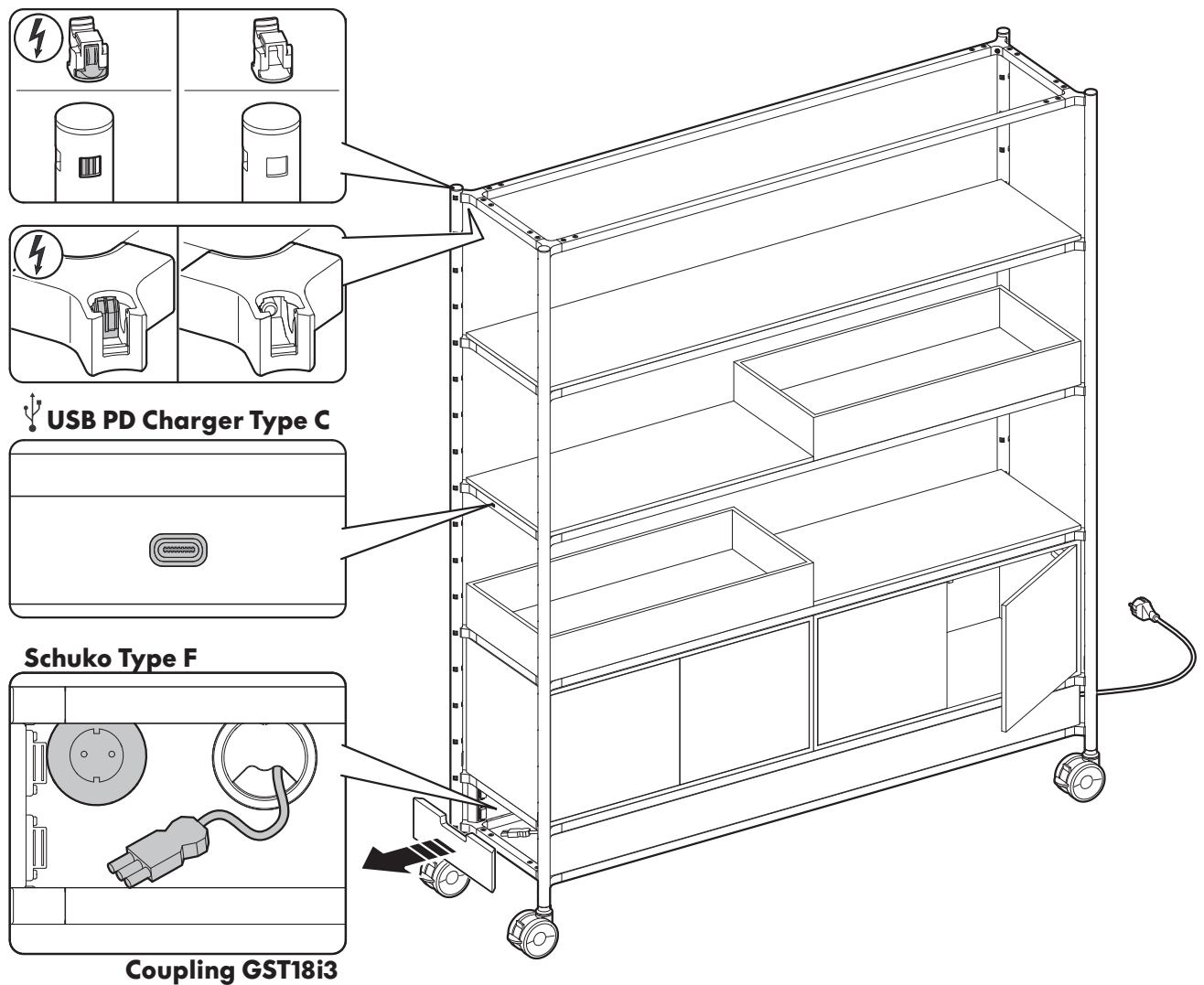
- ▶ Do not lay mains power leads and cables in thoroughfares.



2 Product description

FOS is a mobile office system powered with a 230 V electrical connection. It can be configured as micro-architectural layouts that can be used to create workspaces for a wide range of purposes.

The system consists of basic modules that can be combined flexibly with items of equipment and electrically interconnected. The individual connection frames can be swapped easily using an SW5 Allen key.



- i** Non-electrified uprights are not fitted with a 24 V power track and are used solely for mechanical connection.
- i** Electrified uprights are fitted with a 24 V power track.
- i** Not all shelves are fitted with a USB PD charger type C charging socket.

3 Using prefabricated structures

3.1 Unpacking

i You must check the FOS module for completeness before accepting delivery. Any damage must be documented with the carrier in order to make a claim.

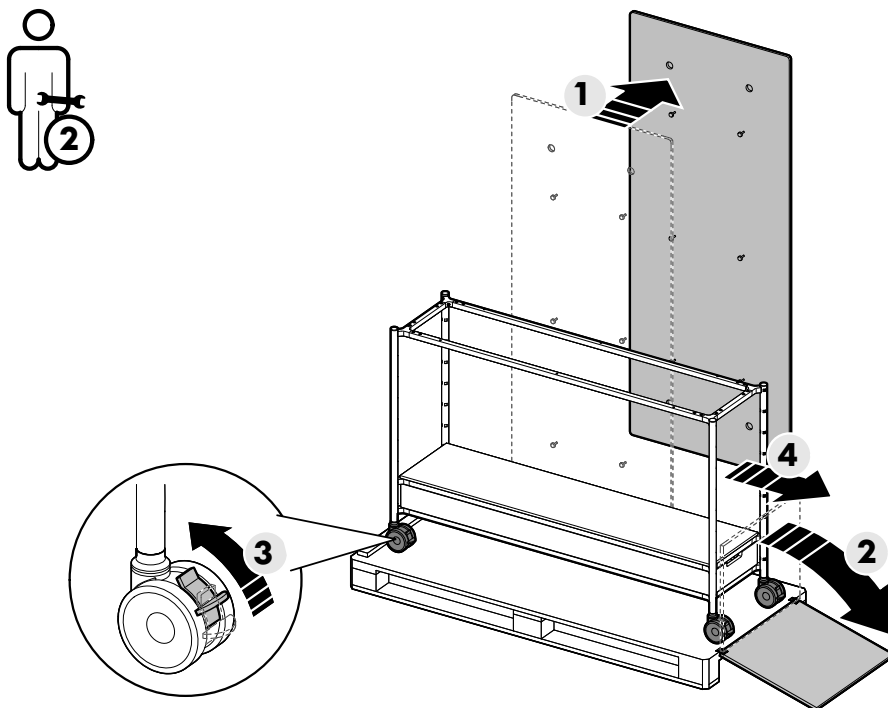
i If necessary, retain the packaging in case further transport is required.

⚠ CAUTION

Risk of injury from falling or tipping furniture.

- ▶ The unit must be unloaded by two people.
- ▶ Carefully roll the FOS module off the pallet.

1. Remove the transport lock.
2. Remove all loose parts from the pallet **1**.
3. Fold down the ramp **2**.
4. Release the brake on the castors **3**.
5. Carefully roll the FOS module off the pallet **4**.



NOTE

Hazards to the environment can occur if product components are disposed of improperly.

- ▶ Ensure product components are disposed of in a proper environmental manner or through waste management specialists.
- ▶ Send components that can be recycled for recycling.

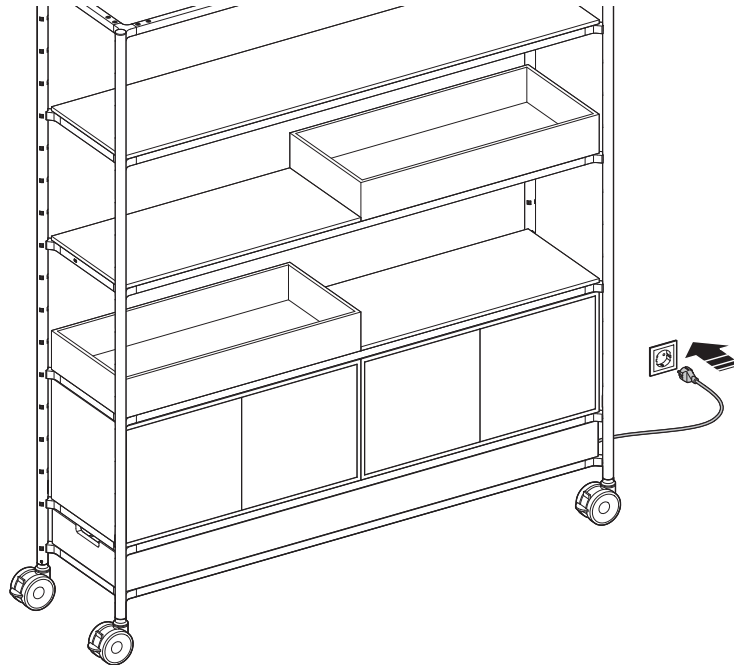
3.2 Connecting

⚠ DANGER

Danger from electric current

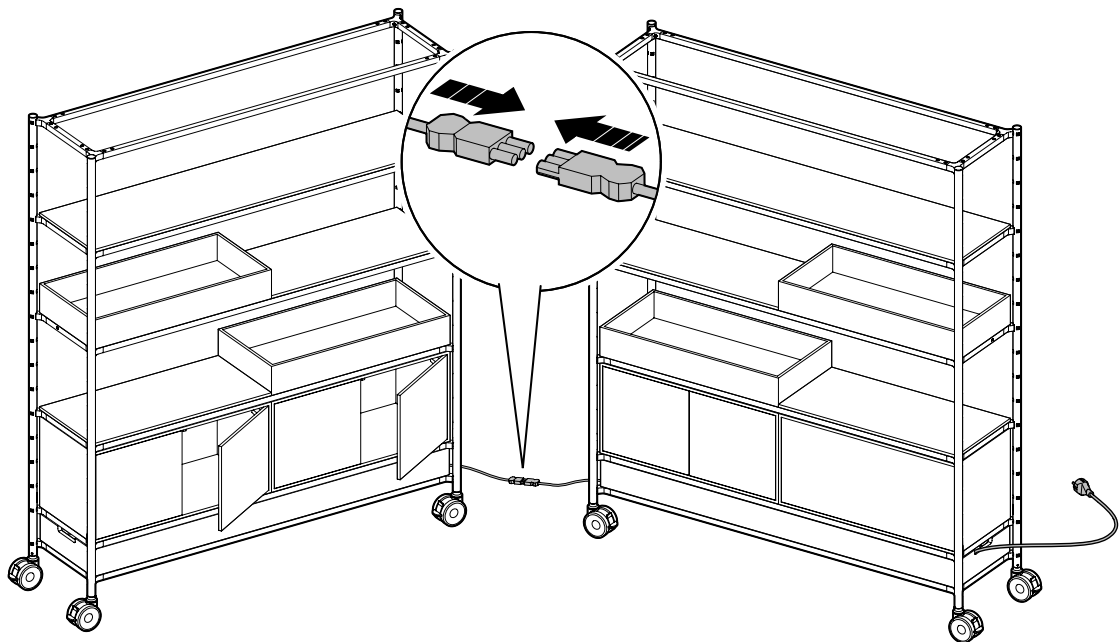
Electrical components (plugs, cables, cases, etc.) must not be modified. If you find a damaged component, disconnect the structure from the mains and replace the defective component. Damaged electrical components must no longer be used.

- ▶ Insert the power plug into a socket.



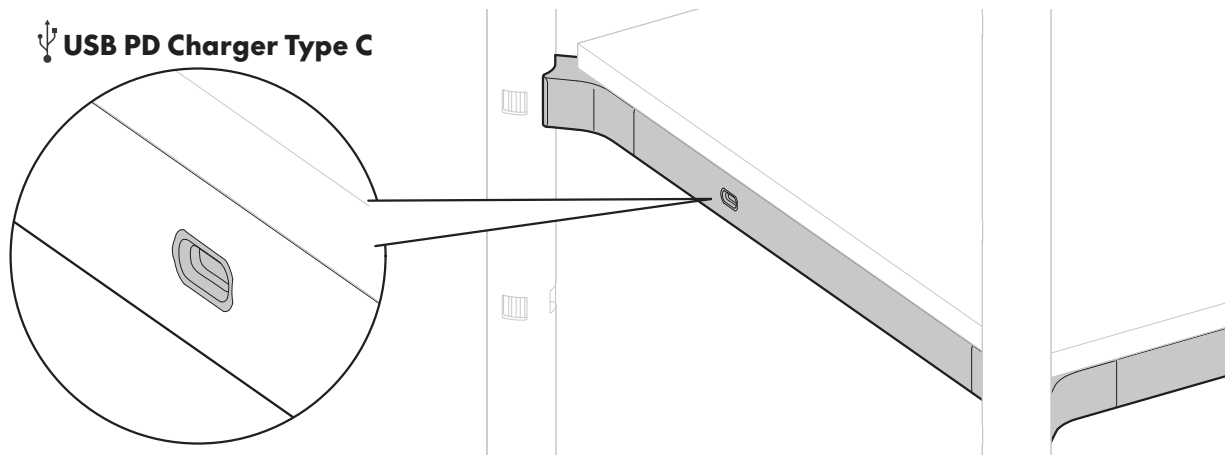
3.2.1 230 V connections

The modules can be electrically interconnected. This enables you to connect multiple modules to each other using a wall socket.

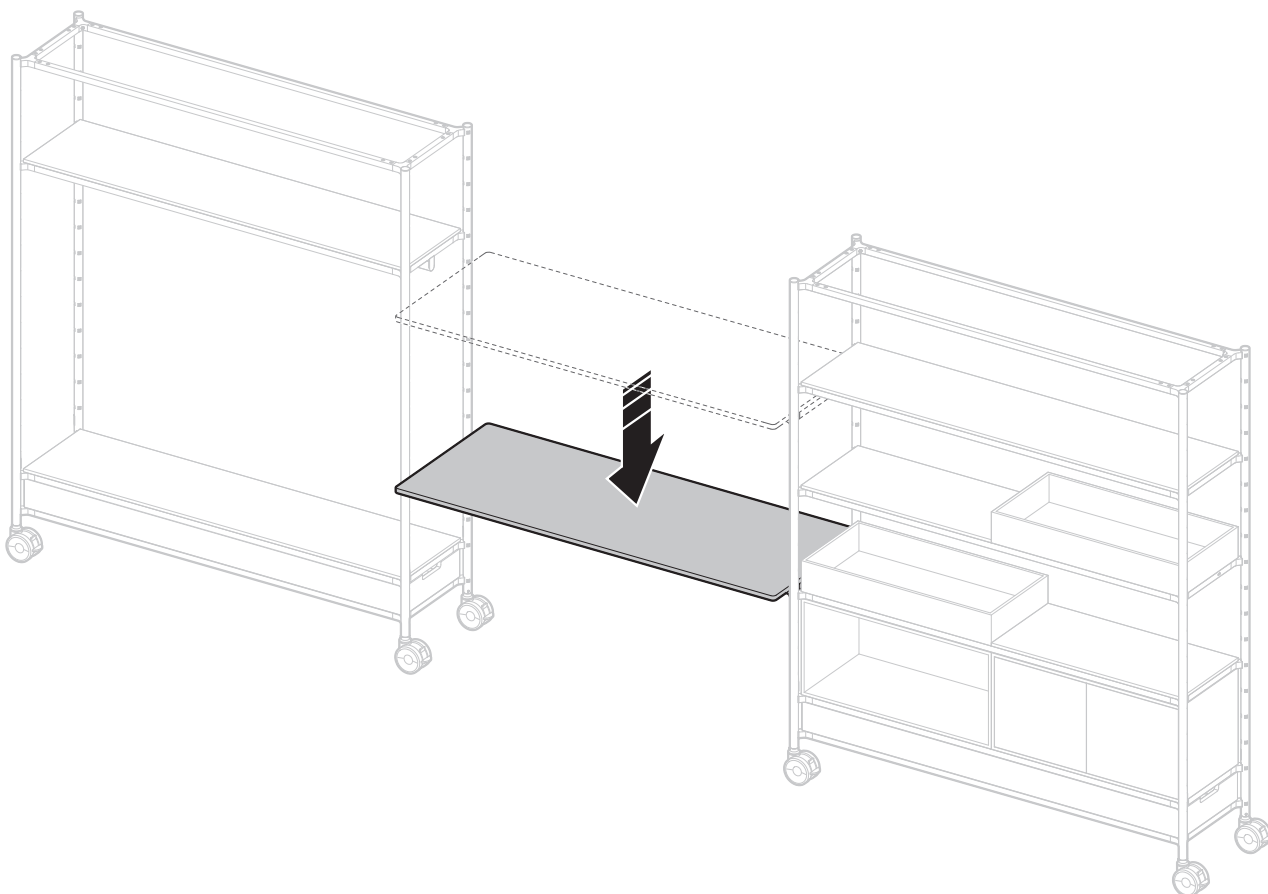


3.2.2 USB PD charging socket (type C)

i Devices can be charged at the charging socket via a USB type C connection, USB Power Delivery (USB PD) with max. 3 A and 60 W.



3.3 Fitting worktop between two modules



3.4 Connecting multiple structures

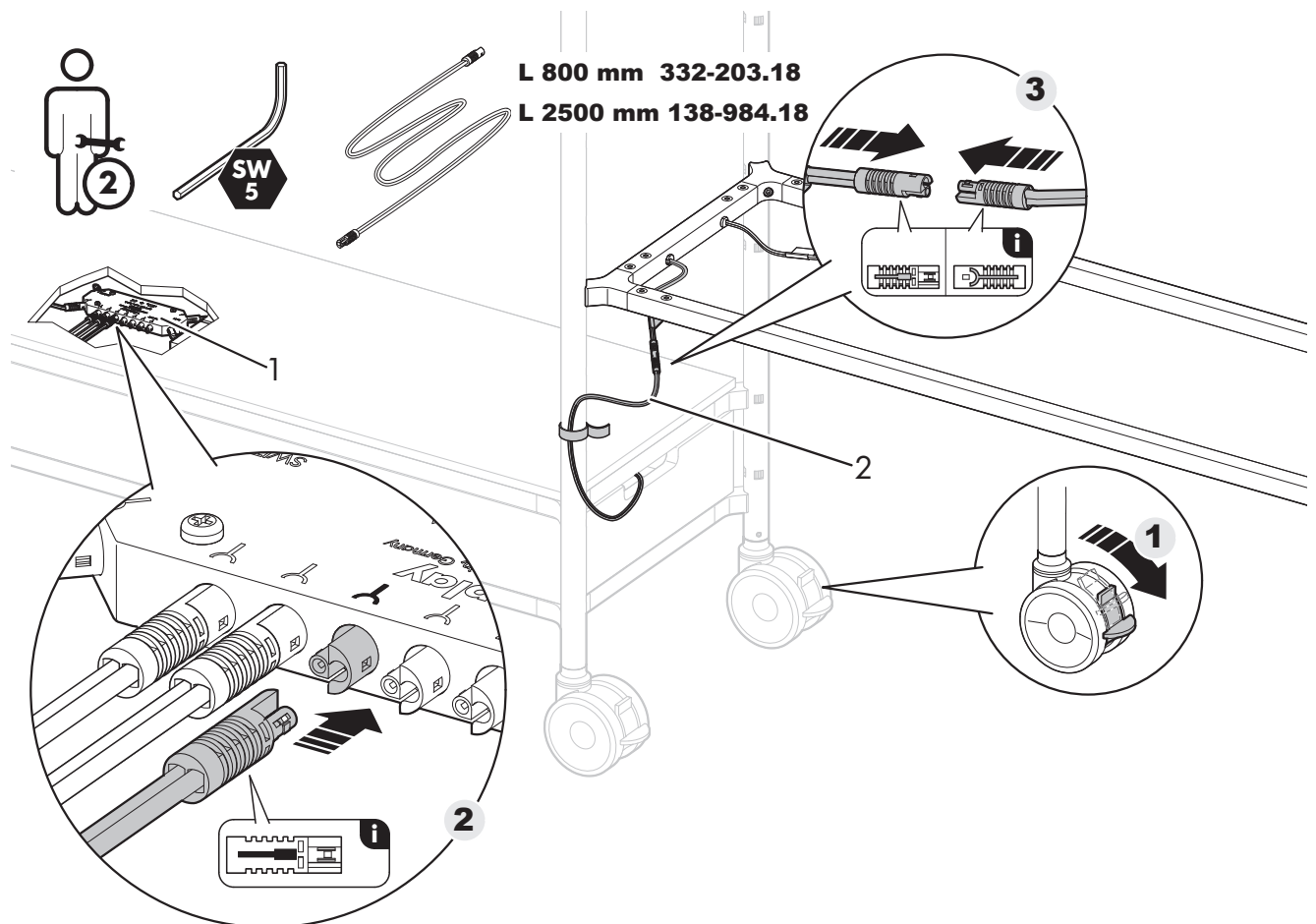
FOS modules can be connected using a connection frame.

⚠ WARNING

Risk of injury from falling goods or merchandise supports

- ▶ Only move FOS modules when they have been separated and the power plug is disconnected.

1. Place the module in the required position.
2. Apply the brake on the castors **1**.
3. Fit a connection frame (see Section „6.1 Assembling connection frame“ on page 14).
4. Insert the extension cable **[2]** into the converter **[1]** in the FOS module **2**.
5. Connect the extension cable **[2]** to the cable on the connection frame **3**.

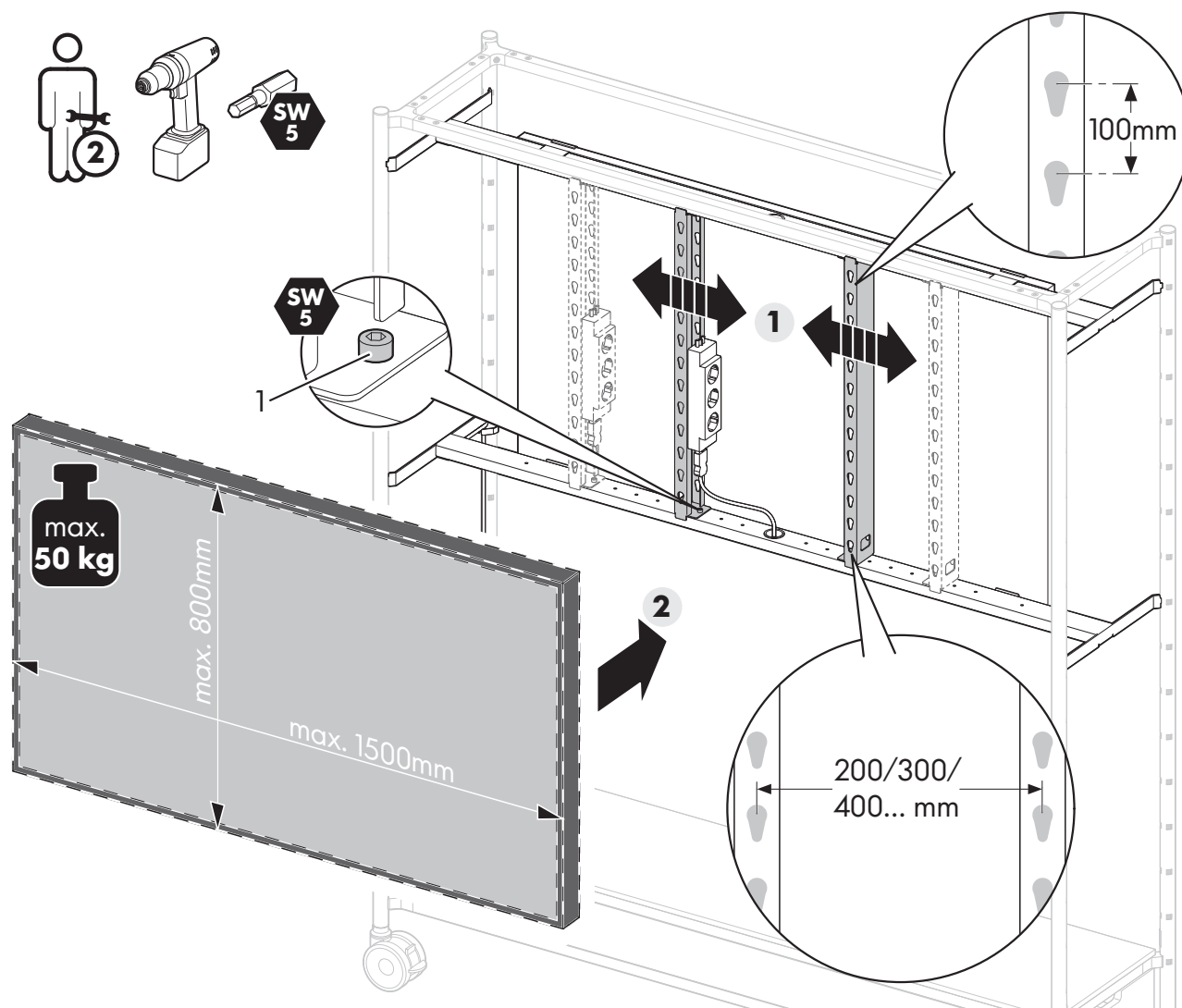


4 Operation of FOS Media

The screen can be fixed in place with M6 or M8 screws (not included).

The fitting is in accordance with the VESA standard: W x H of 200 x 200 mm to 1000 x 400 mm in 100 mm increments. We recommend using 55" devices.

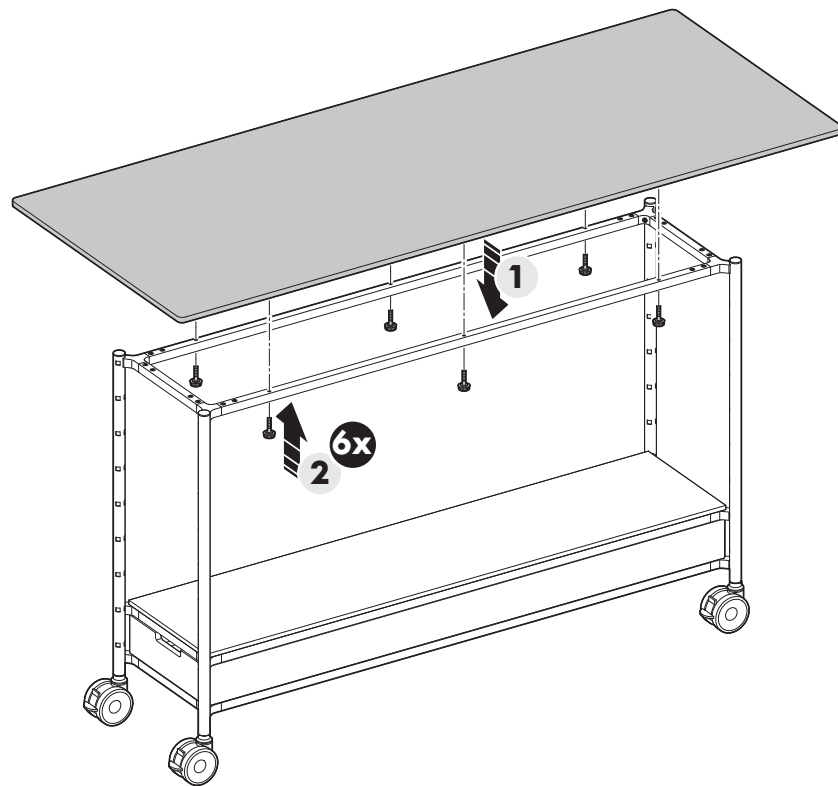
1. Attach the screen mount to fit the size of the device **1**.
2. Attach the screen mount with the self-tapping screws **[1]**.
3. Fit the device **2**.



5 Operation of FOS Meet

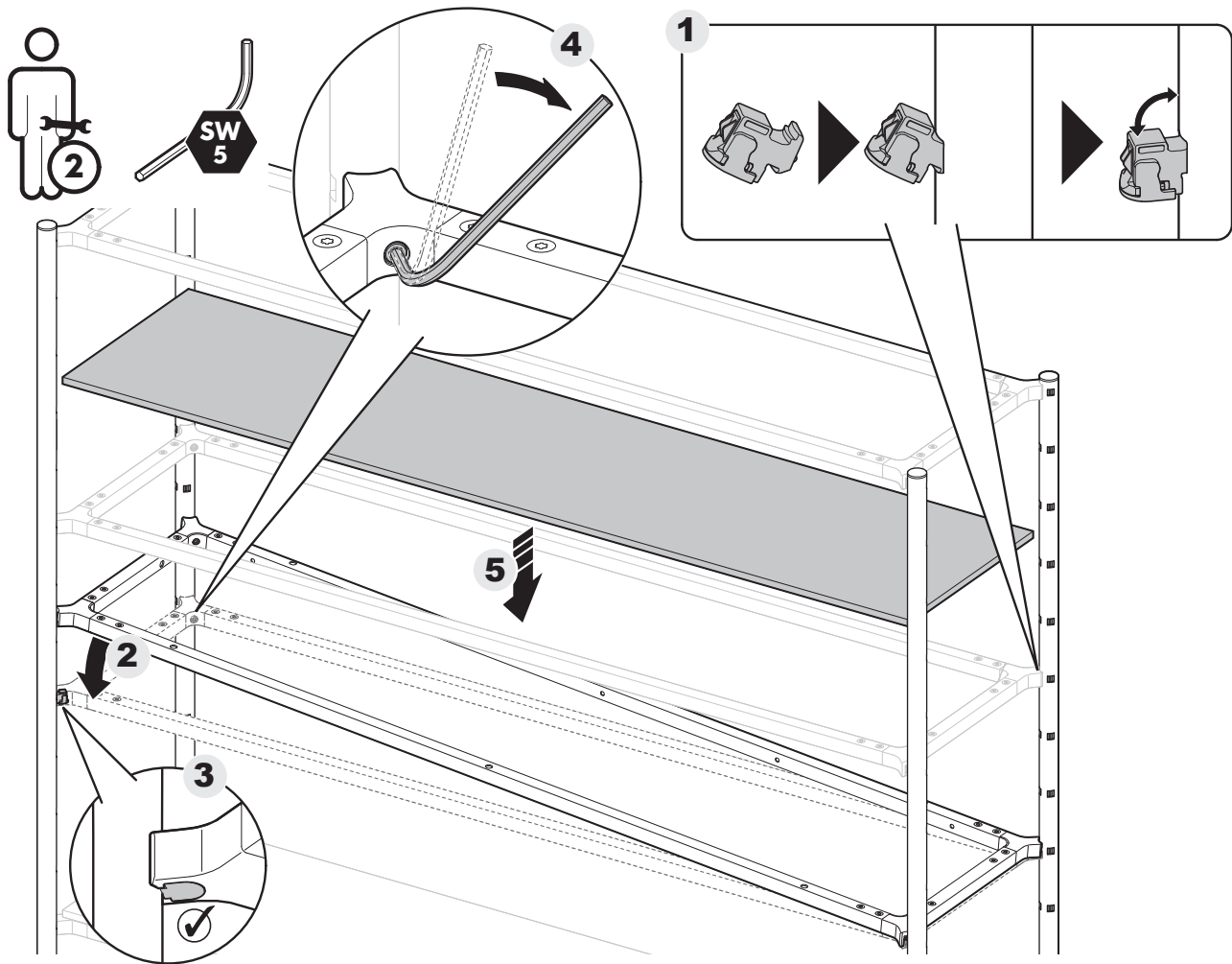
5.1 Assembling table top

1. Place the table top on the frame **1**.
2. Screw the panel to the frame from below with the knurled screws **2**.

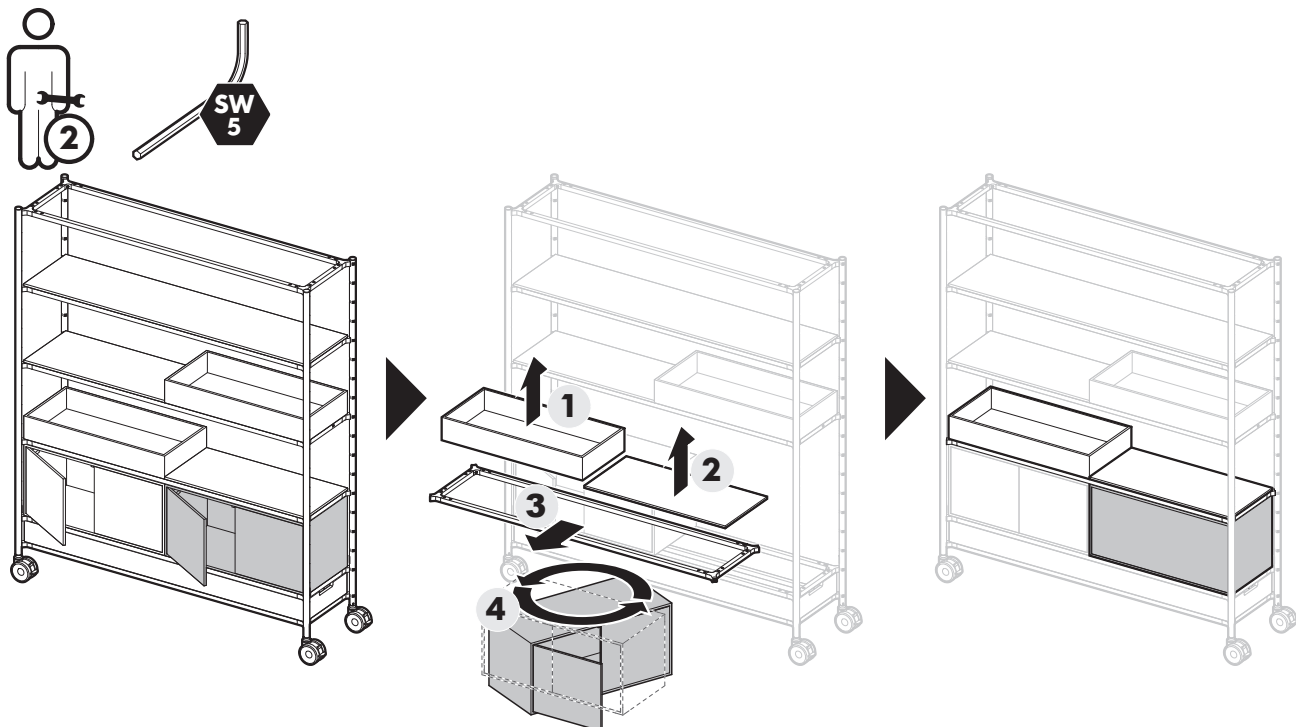


6 Accessories

6.1 Assembling connection frame



6.2 Installing/reconfiguring furniture



6.3 Assembling open/closed storage box

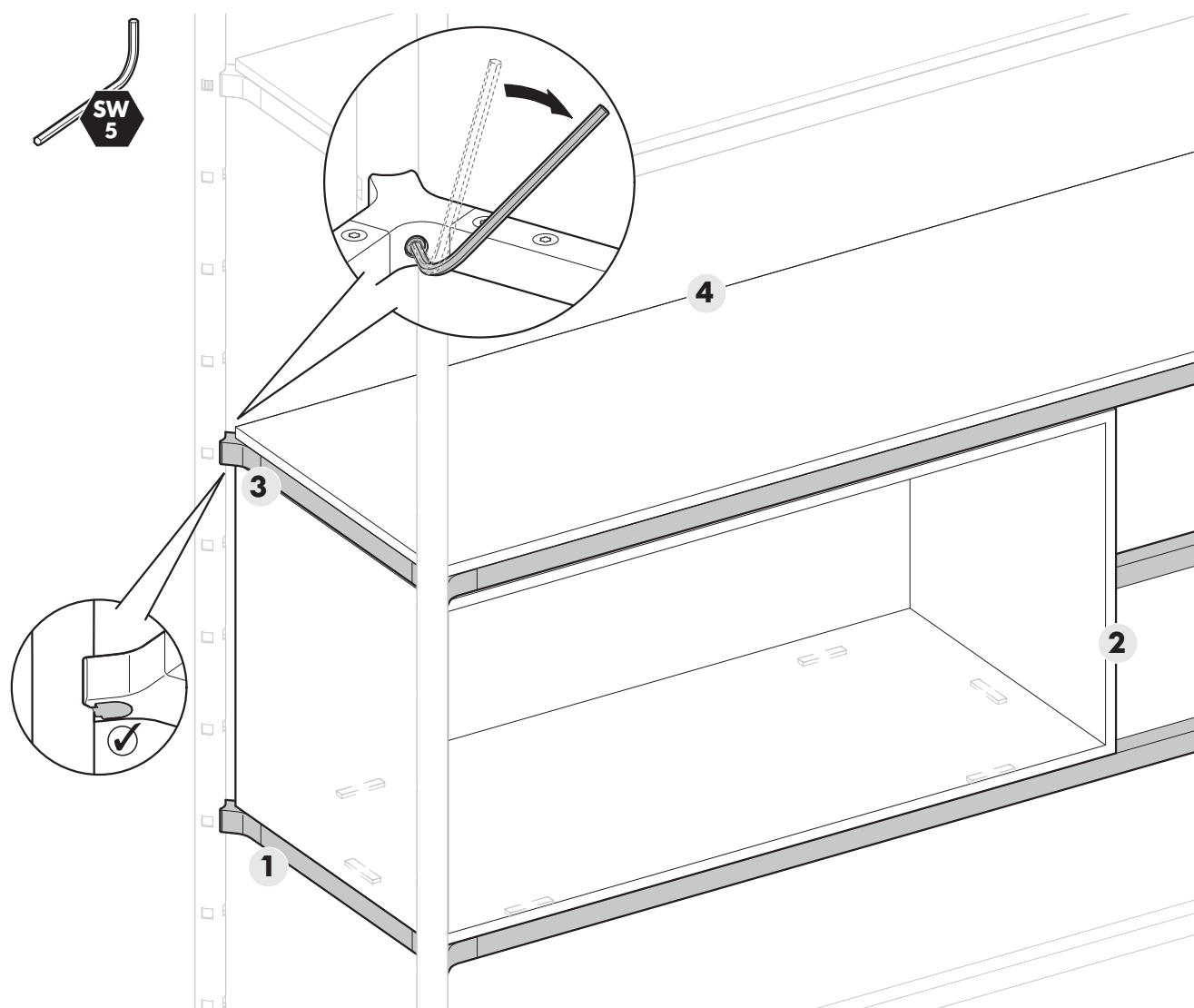
⚠ CAUTION

Risk of injury from falling furniture components.

- ▶ Open/closed storage boxes must always be fitted between two frames.

i Tighten the frames with an SW5 Allen key.

1. Fit the lower frame **1**.
2. Insert the storage box **2**.
3. Fit the upper frame **3**.
4. Place the shelf on the upper frame **4**.



6.4 Assembling whiteboard/pinboard/side panels

NOTE

- ▶ We recommend using whiteboard pens, e.g. Edding 250 or 360, to ensure that the board lasts and is easy to clean. Do not use water-soluble pens!
- ▶ Clean the whiteboard with a dry or damp microfibre cloth in circular motions.

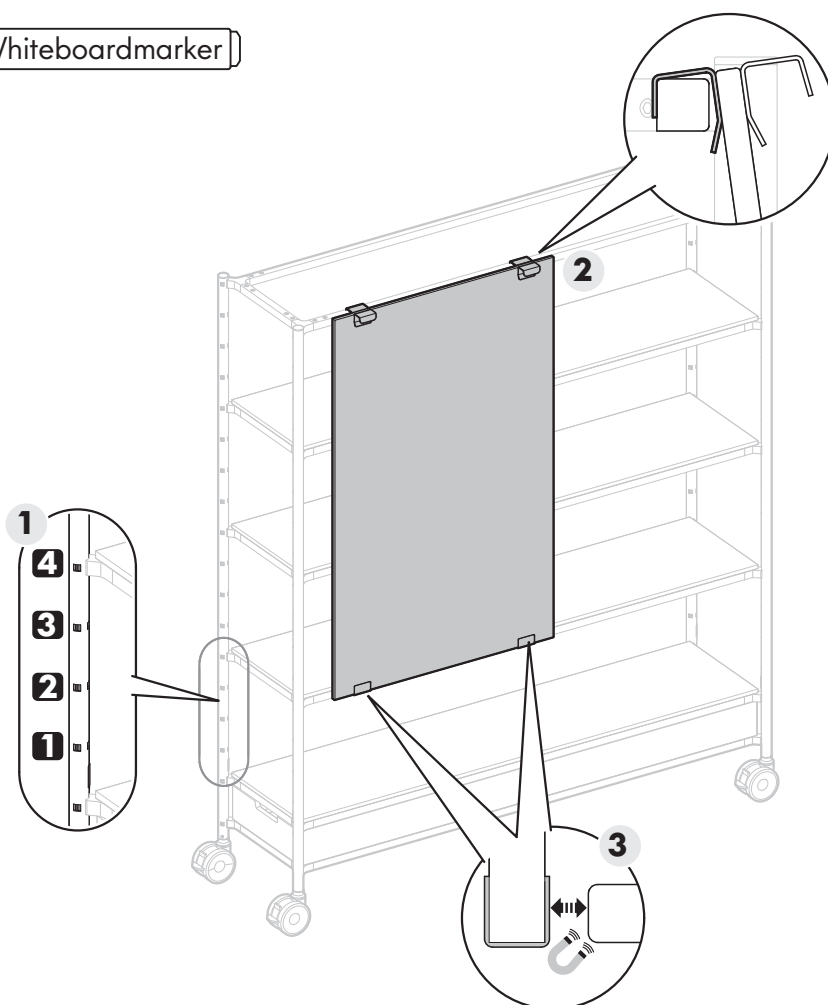
Basic clean before first use

- ▶ Clean the whiteboard with a damp microfibre cloth in circular motions.

Intensive clean

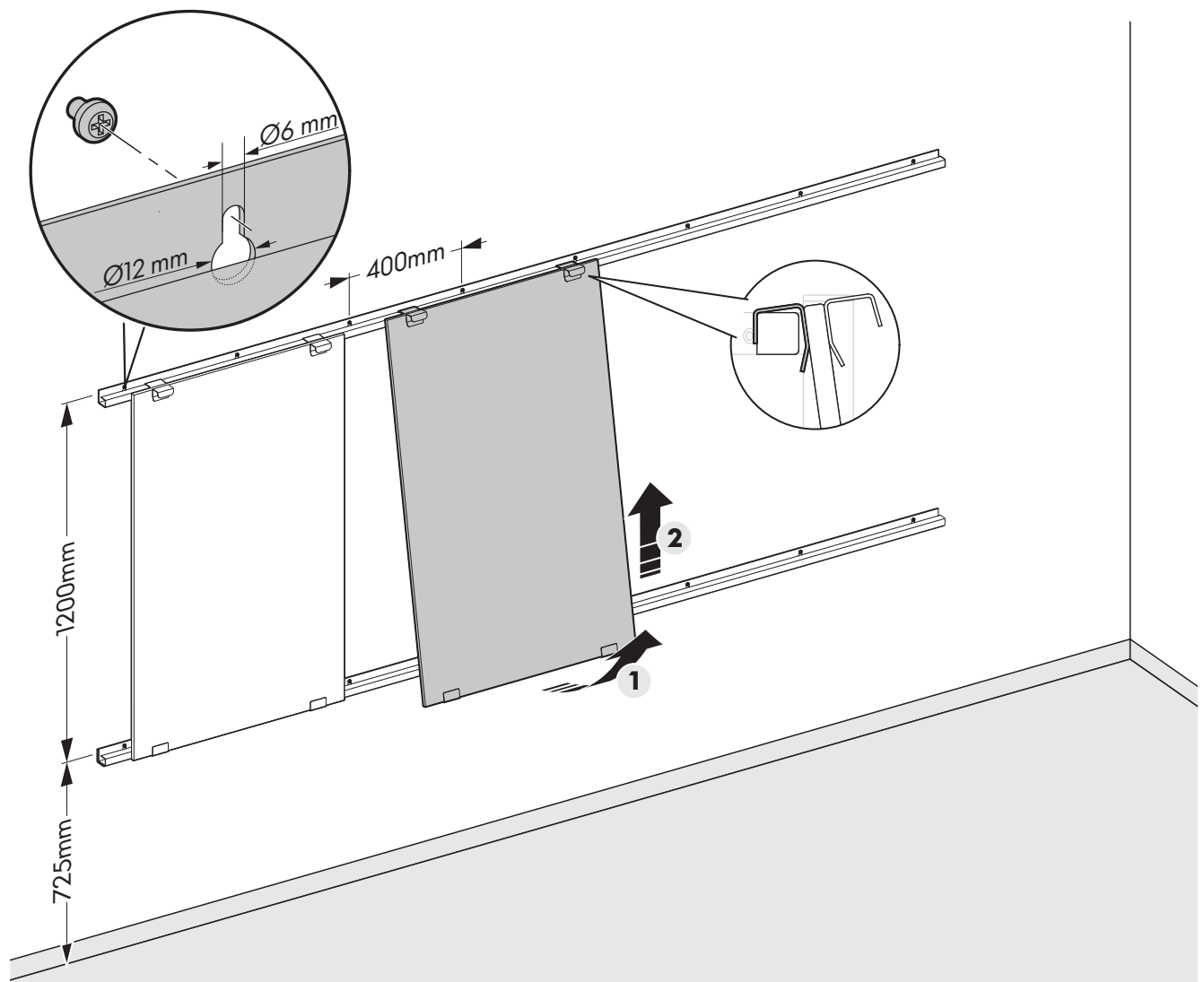
- ▶ Clean the whiteboard with a damp microfibre cloth and, if required, a grease-free cleaner, using circular motions.

1. To use a board, a connection frame must be fitted at the height shown **1**.
2. Hook the board into the upper frame **2**.
3. Guide the lower part of the board into the lower frame. It is connected with a magnet to secure it in position while moving **3**.



6.5 Assembling wall rail

- ▶ Fasten the profile rails to the wall with suitable fasteners at 400 mm intervals using the pre-drilled holes.



7 Technical data

Connected electrical loads

Connection / mains power	230/240 V AC
Frequency	50-60 Hz
Converter protection class	II
System operating voltage	24 V DC
System components protection class	III
Maximum power for each power-feed point	7 A 168 W

8 Weight loads

WARNING

Risk of injury from falling objects and furniture components.

The system can fail if the maximum permissible load on the furniture or individual components is exceeded.

- ▶ Please observe the maximum load value for the individual items of furniture.
- ▶ Do not exceed the maximum load of 30 kg per frame.

The specified weight loads refer to the components listed in the Visplay manual. The maximum weight loads apply with respect to a uniform load distribution. The load must be reduced immediately if there is visible deflection or deformation of the components.

Maximum load

Connection frame with support insert	30 kg
Table top	30 kg
Hanging rail	60 kg
TV bracket	50 kg

9 General information

9.1 Cleaning

Dust can accumulate and furniture parts can become dirty during use. With regular cleaning and care, the product will last a long time.

1. Disconnect the power plug from the socket.
2. Remove all items from the storage areas.
3. Remove dirt carefully with a soft, dry cloth.
4. Remove stubborn dirt with a mild cleaning agent.

9.2 Storage

Store the product and its components under the following conditions:

- Do not store outdoors
- Store in a dry and dust-free location
- Protect from sunlight
- Avoid mechanical shocks
- Storage temperature: 23 °C
- Relative humidity: 50%

9.3 Disposal

NOTE

Disposing of product components incorrectly can harm the environment.

- ▶ Ensure product components are disposed of in a proper environmental manner or through waste management specialists.
- ▶ Send components that can be recycled for recycling.
- ▶ Have an approved specialized disposal company dispose of electrical and electronic components.

visplay

www.visplay.com

info@visplay.com